



X-U4 Specifications

Version : V1.0 Release date : 2020.01.14

Catalog

Brief Introduction.....	3
About Software.....	3
Characteristics.....	3
Guiding.....	4
Safety Notes.....	4
Function.....	5
Control size.....	5
Flexible communication free wiring.....	5
Multi area arbitrary collocation.....	5
Multi area arbitrary collocation.....	6
Cluster management.....	6
Flexible program release.....	6
Timing sending programs.....	6
Timing power on/off.....	6
Test button.....	6
Automatic Correcting Time.....	7
Colorful border and stunt.....	7
Sensor.....	7
Multilingual.....	7
Technical parameters.....	8

Brief Introduction

Thanks for ordering LED control card. The design of the control card is according to the international and industrial standard, but if the operations are incorrect, it will probably bring you personal injury and financial harm. As to avoid these and win more from your equipment, please obey the specifications of this file

About Software

Cannot do any modification, decompilation, disassembling, decoding or reverse engineering on our software, it's illegal.

Characteristics

- ◆ On board USB interface, U disk transmission distance $\leq 15\text{m}$;
- ◆ Good compatibility and strong reading ability for various USB disks.
- ◆ The screen parameter setting / scanning configuration / program update / time correction / brightness adjustment / timing switch can be easily done by inserting the U disk.
- ◆ supports 128 programs, and each program can be divided into 8 areas.
- ◆ The display effect editor real-time preview, what you see is what you get.
- ◆ The moving speed of the screen can be adjusted arbitrarily to make the screen move more smoothly.
- ◆ It supports all-around editor and supports Mongolian, Hebrew, Arabic and other arbitrary typesetting functions conveniently.
- ◆ The board is equipped with brightness, temperature, temperature and humidity sensor interface base as standard, and infrared remote control head interface base as standard.
- ◆ The interface is more abundant, the function is more powerful, the process is better, and the performance is more stable.

Guiding

Safety Notes

- ◆ Input voltage is 5V, voltage range is from 3.5V- 6V please make sure the quality of the power supply of X-U series.
- ◆ Please make sure that all the power supply cables are plugged off when you want to connect or plug off any signal or controlling cables.
- ◆ Please make sure that all the power supply cables and signal cables are plugged off when you need to put in or take off the hardware equipment.
- ◆ Please make sure the environment is clean, dry and ventilated when you use this product, also, do not put this product to a high temperature and wet environment.
- ◆ This product is electronic products, please keep away from fire, water source and flammable&combustible products.
- ◆ There' s high pressure components in this products, please do not open the box and repair it by yourself.
- ◆ Turn off the power supply immediately when you find smoking, peculiar smell or something unusual. And contact with us soon

Function

X-U4 is one of the X-U series products. It has the characteristics of high product integration, high signal sensitivity, fast data transmission speed, easy structure installation, use and maintenance. The product uses U-disk to upload program information to LED display screen, which is convenient for installation and wiring free; it is a good choice for cluster display system with scattered installation points or high wiring cost.

X-U series products are suitable for all kinds of large and medium-sized led lintel displays and LED cluster display systems. The load index and display effect of the products have been greatly improved, with more functions and more complete series.

Control size

Based on powerful hardware platform the product, support large LED display, Single color $\leq 100\text{K}$ Pixels : 3200*32、2112*48、1600*64 , dual color $\leq 50\text{K}$ pixels , 1600*32、1056*48、800*64 , The maximum width of single port is 3200 pixels, the control area is flexible, the display function is rich, and the performance price ratio is super high.

Flexible communication free wiring

On board 2 nos of T08 and 4 nos of T12 display interfaces, users can upload program information to LED display screen with USB flash disk, which is convenient for installation and wiring free; it is a good choice for cluster display system with scattered installation points or high wiring cost.

Multi area arbitrary collocation

Multi area arbitrary collocation

Support multi content display, use can add Image/text/animation/lunar calendar/digital clock/analogue clock/timer/temperature/temperature & humidity/noisy, ect then rolling display these collocation contents

Cluster management

Through a stable and efficient network control mode, users can seamlessly connect multiple LED screens which was distributed in different regions remote centralized management and maintenance, cluster release programs. In addition to send programs with the cluster, but also cluster settings boot, shutdown, correction time , time switch and brightness adjustment ect. Which can reduce the time user operation and management of the LED screen , greatly improve their work efficiency

Flexible program release

X-U series mainly support USB to upload programs .

Timing sending programs

Supporting send programs regularly, users only need to set the time of the program in the software, and the program will send the program exactly according to the set time.

Timing power on/off

The Ledshowtw software has the function of timer switch. After setting the boot and shutdown time, the computer will automatically turn on and turn off on time, so that we can make reasonable use of manpower and material resources, and greatly improve the service life and reliability of the display. When the user is inconvenient to operate on the side of the computer, the timing switch-gear can better realize the unattended function.

Test button

With the increases of use time , the quality of the screen will also change. Therefore, the large LED screen needs regular display quality detection and correction. The product has the function of self testing screen, the Users just need to flow simple operation steps, It can complete the brightness of the screen , color detection, enabling customers to keep tracking of each LED the life of the screen.

Automatic Correcting Time

The system will automatically correction time according to the real-time time,just like the mobile phone and the computer, so that there is no need to manually calibrate the time and place the places that need not be specially installed to the LED display, it can automatically correction the time, so as to ensure the uniformity of the time of all display terminals at any time.

Colorful border and stunt

The Ledshowtw software has build-in colorful border and super stunt, as guest editor broadcast programs provide rich and colorful eye-catching border and cool exciting stunt change. A variety of colorful border to meet customer needs and different editing applications, greatly improving the broadcast effect of the program.

Sensor

X-U series on-board temperature, humidity, brightness sensor interface, can accurately measure and display the temperature, humidity, brightness value. Provide accurate and accurate data reference for customers in places where temperature, humidity or noise need to be strictly controlled,so as to avoid unnecessary losses caused by improper temperature, humidity or noise control.

Multilingual

The system includes many kinds of font, such as multiple simplified Chinese text and traditional font, the software supports over 20 languages, such as English,Korean,

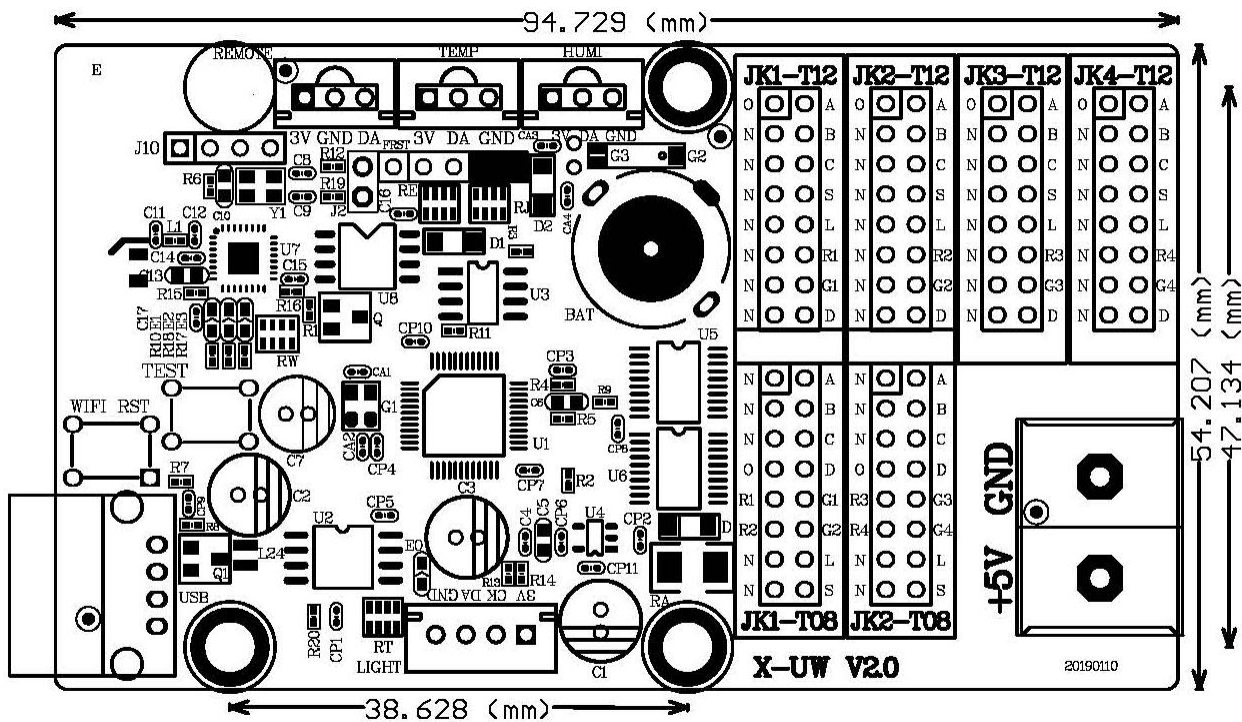
Japanese, Greek, French and so on. The product is suitable for users from all over the world.

Technical parameters

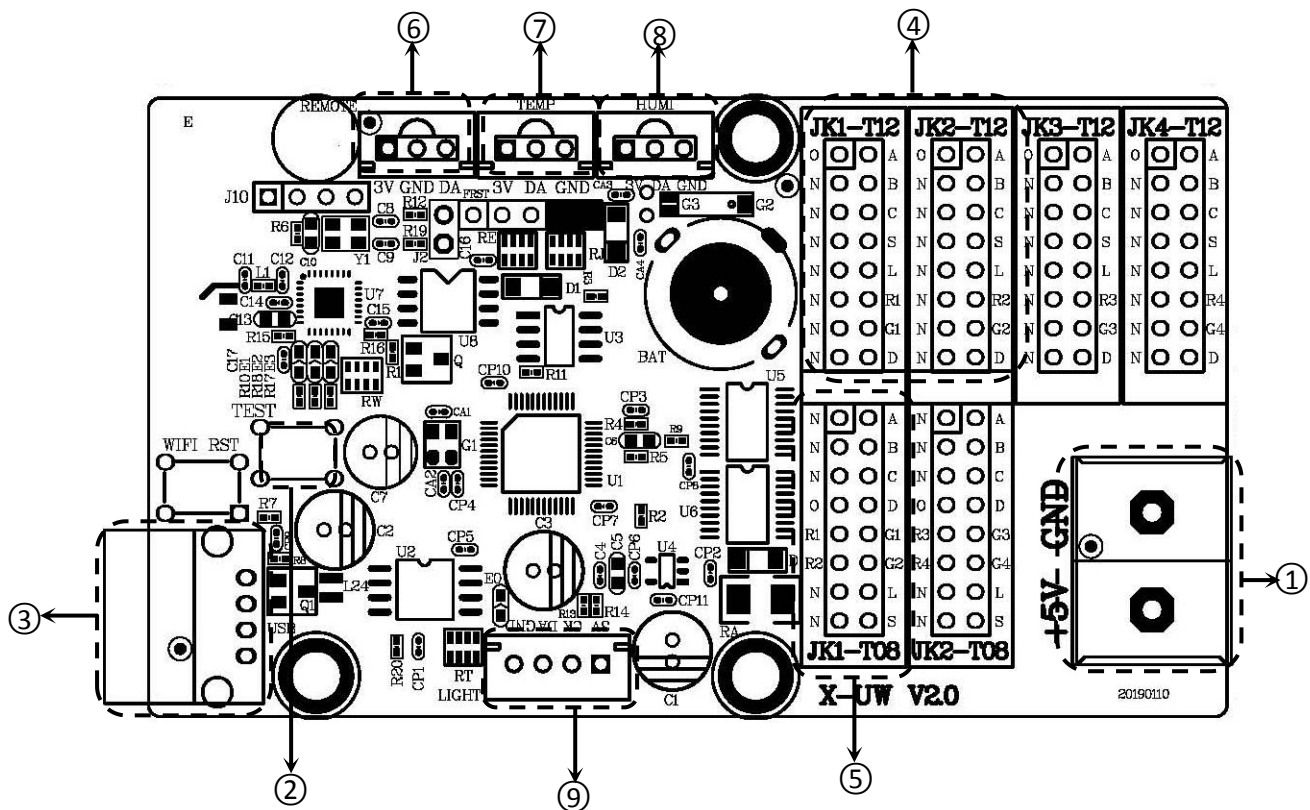
Technical parameters	
Single color	Single color 64K : 3200*16、2048*32、1344*48、1024*64
	Dual color 32K : 1600*16、1024*32、672*48、512*64
Memory storage	2MByte
Screen types	All kinds of single , double,tri colors LED screen
Program quantity	Screens cluster management/multi-program/multi-areas display/multi-languages
Program types	Normal/Shared program
Program quantity	Support 128 programs,8 areas for each program
Area type	Image/text/animation/lunar calendar/digital clock/analogue clock/timer/temperature/
Frame mode	Most advanced colorful / magic graphics frame/Area frame
Clock	Analogue clock/digital clock/timing and counting-down timer (support multi-groups
communication interface	USB port
Interface	4 nos T12 & 2 nos T08 port
Sensor	Temperature /humidity/noise
Remote control	Remote control program/lock screen/brightness adjustment/power on/off /screen test
Bright regulation	16 grades brightness, manual and auto-timing adjustment/remote control

Details	
Input power supply	5V (3.5V ~ 6V) , Please make sure the quality of power supply.
Power Dissipation	≤2W
Temperature	-40℃ ~ 80℃

DEMENSION



Interface



Interface		
1	Power	5Vpower interface ,DC volts, standard 5V ,support 3.5V ~ 6V)
2	TEST	Test button
3	USB	USB interface , Support usb disk upload program
4	T12	T12 (JK1-T12、 JK2-T12, JK3-T12,JK4-T12)
5	T08	T08 (JK1-T08,JK2-T08)
6	REMOTE	Brightness sensor interface
7	TEMP	Temperature and humidity sensor interface
8	HUMI	Temperature sensor interface
9	LIGHT	Infrared remote control interface

Shanghai ONBON Technology Co.,ltd (Headquarters)

Address: 7 Floor, Tower 88, 1199#, North Qinzhou Road, Xuhui District, Shanghai City, China

Tel Phone: 086-21-64955136

Fax: 086-21-64955136

Website: www.onbonbx.com

ONBON (Jiangsu) Optoelectronic Industrial Co.,LTD

Address: 1299#, Fuchun Jiang Road, Kunshan City, Jiangsu Province, China

Sales Contacts

Tel: 0086-15921814956 0086-15800379719

Email: onbon@onbonbx.com

Second Development

Tel: 0512-66589212

Email: dev@onbonbx.com

iLEDCloud

Website: <http://www.iledcloud.com/>



Public Wechat



ONBON APP